

CAFETERIA FOUNDATION PLAN

SCALE: 3/16" = 1'-0"

STRIP FOOTING (SF-X) SCHEDULE				
MARK	WIDTH x THICKNESS x LENGTH	REINFORCEMENT		COMMENTS
		TOP BARS	BOTTOM BARS	
SF-1	2'-0" x 1'-0" x CONT.	(2) #5 CONT.	(3) #4 CONT.	
SF-2	6" x 2'-0" x CONT.	(1) #4	(1) #4	

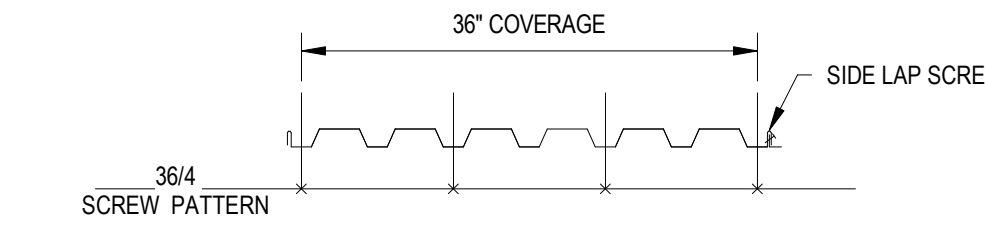
LOAD BEARING WALL (LBW#X) SCHEDULE		
Mark	STUD WALL REQUIREMENT	REMARKS
LBW#1	600S162-43 @16"o.c.	FINAL DESIGN BY D.D.

LEGEND - ROOF FRAMING

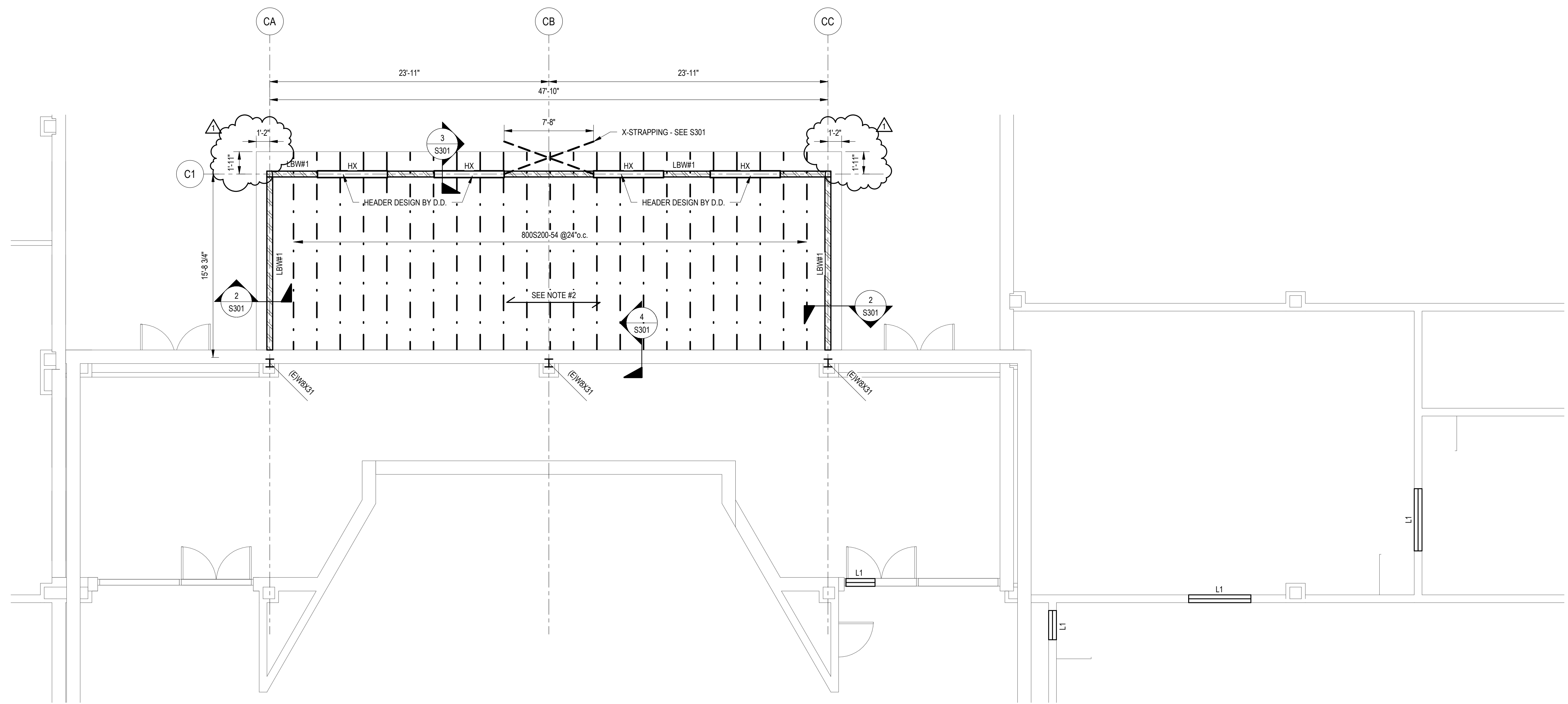
- LIGHT GAUGE ROOF RAFTERS @ 24"o.c.
- 0 --- GRID DESIGNATION FOR CENTERLINE OF COLUMN
- GRID DESIGNATION FOR OUTSIDE FACE OF STUD OR CMU
- (E) INDICATES EXISTING
- INDICATES X-STRAPPING
- Lx INDICATES NEW LINTEL IN EXISTING NONLOAD BEARING CMU WALL - SEE DETAILS ON S301 COORDINATE EXACT LOCATION AND SIZE WITH MECHANICAL DRAWINGS
- LBW#X INDICATES CFS LOAD BEARING WALL - SEE SCHEDULE THIS SHEET

NOTES - ROOF FRAMING

- SEE SHEET S101 FOR JOIST, DECK AND LIGHT GAUGE FRAMING NOTES. ALSO SEE SHEETS S102 FOR TYPICAL DETAILS NOT SHOWN ON PLAN.
- TYPICAL ROOF DECK: 5'11"2" DEEP, 22 ga. GALVANIZED, TYPE 'B' METAL ROOF DECK.
- METAL ROOF DECK SHALL BE ATTACHED TO STEEL SUPPORTING MEMBERS WITH #12 TEK SCREWS IN A 364 PATTERN.



8' 4' 0' 8'
SCALE: 1/8" = 1'-0"



CAFETERIA ROOF FRAMING PLAN

SCALE: 3/16" = 1'-0"